

CKF ADDICTION TREATMENT

ANNUAL
REPORT
2022



BOARD OF DIRECTORS

**SUSAN
YOUNG**

PRESIDENT

**BRENDA
O'GORMAN**

VICE-PRESIDENT

**JIM
HUGHES**

SECRETARY/TREASURER

**ALAN
JILKA**

BOARD MEMBER

**VICKY
BONILLA**

BOARD MEMBER

**SHAWN
BAIRD**

BOARD MEMBER

**MILLIE
MOYE**

BOARD MEMBER

**ASHLEY
JARVIS**

BOARD MEMBER

**LESLIE
BISHOP**

BOARD MEMBER

Mission: To continuously challenge our systems of care, so that addiction is treated, in all its forms, as a chronic disease.

Vision: A world where every individual suffering from addiction gets better through better access, better treatment, and better support and understanding.

BOARD





MESSAGE FROM THE PRESIDENT & CEO

CKF Addiction Treatment was founded in 1967 to assist individuals struggling with addiction and substance use. We have done great things as an agency to connect with individuals who seek our services. However, those with addiction largely continue to be shunned by society and die invisibly all around us every day.

We have not accomplished what we set out to do until all of those with addiction are understood as humans suffering from a chronic disease who deserve compassion from society and quality care from the health care system.

I believe we must stop allowing the system to change at its own rate, because that rate is much too slow and each moment that passes is a moment that allows someone from our community to die needlessly. We would not stand for it if a patient with any other chronic illness were slipping through the cracks in such a way. Yet, we know it happens every day to those with addiction and are not doing enough as a system of care.

There are caring individuals within the health care system. However, the system as a whole does not consistently and cohesively invest in early detection of moderate to high risk substance use, health care does not consistently and cohesively ensure that those needing services receive those services, and health care does not provide long-term follow-up care to those with addiction who will be managing it for the rest of their lives.

CKF Addiction Treatment is, and will continue, fighting for those who deserve these changes in the health care system the most – those who are suffering and fighting for their lives. CKF Addiction Treatment will find every opportunity to change the system of care by aligning with the health care system and making changes from within.

Shane Hudson, MS, MSHCT, LCP, LCAC
President & CEO

“ —

We have not accomplished what we set out to do until all of those with addiction are understood as humans suffering from a chronic disease...



AGENCY HIGHLIGHTS

- COVID-19 pandemic protocols continue with telehealth options and reduced residential unit capacity

- Placed Peer Mentor services onsite at several locations in Saline County.

- Numerous presentations were held at conferences and webinars for clinics, hospitals, hospital networks, and the KU ECHO series.

- Continued to expand clinic partner sites throughout the state as part of CKF's primary care medical integration efforts. CKF Addiction Treatment has partnerships with 9 sites in Colby, Fredonia, Hays, Hoxie, Junction City, Lakin, Salina, Seneca, and Topeka.

- Participated in the Back to School Fair in July

- Participated in the Tri-Rivers parade in August

- Held a Color Run and Pancake Breakfast to celebrate National Recovery Month in September

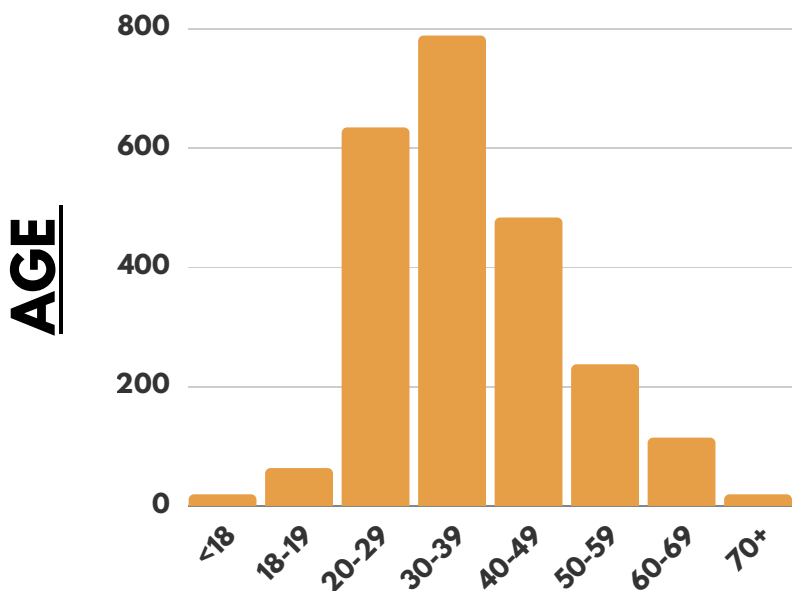
2022 Grants and Funding Awards:

- PPW grant for the Designated Women's Program
- OD2A and Salina Regional Health Foundation CHIP grant-to continue efforts to educate the community, screen patients in partner settings, and connect those with treatment needs in Saline County with a focus on OUD
- KanHouse-SAMHSA grant through KDADS to support the Bridgehouse model in Topeka
- Salina & Saline County 888 alcohol tax funds
- Miller Trust-funds to purchase medical equipment as CKF expands its medical clinic
- Opioid Grant (SOR3)
- Salina Charities League-Funding for Zoom licenses so patients can access services remotely.

HIGHLIGHTS

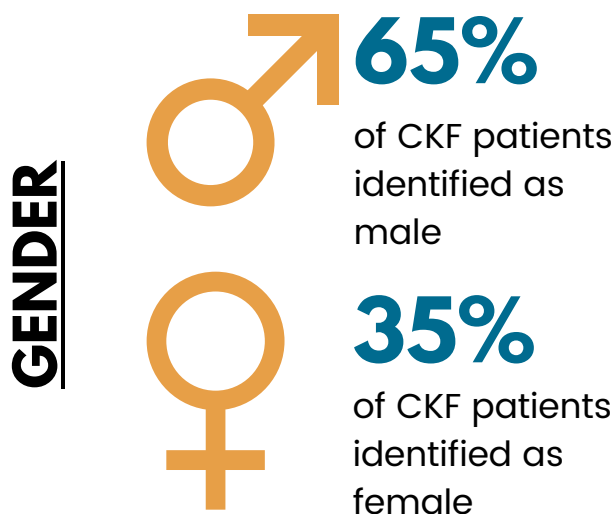


DEMOGRAPHICS & POPULATION SERVED



86

CKF Addiction Treatment served patients from 86 counties in Kansas (82% of total counties)



COUNTY

DICKINSON	7%
MCPHERSON	12%
SALINE	47%
ADDITIONAL KS COUNTIES	32%
OUT-OF-STATE	2%

2357

unique patients received services from CKF Addiction Treatment in 2022

DEMOGRAPHICS



AGENCY IMPACT

EFFECTIVENESS



94%

of patients surveyed reported not utilizing an ED service within the previous 30 days.

Target Goal: 70%



71%

of patients surveyed feel helped by the services they received at CKF Addiction Treatment

Target Goal: 70%



61%

of patients surveyed report their ability to handle symptoms is better now compared to before treatment services

Target Goal: 70%



52%

of patients surveyed report their ability to accomplish things is better now compared to before treatment services

Target Goal: 70%



49%

of patients reported a decrease in symptoms of depression.

Target Goal: 60%



48%

of patients reported a decrease in symptoms of anxiety

Target Goal: 60%



46%

of patients surveyed report their ability to handle daily problems is better now compared to before treatment services

Target Goal: 70%



40%

of patients surveyed report their ability to handle social situations is better now compared to before treatment services

Target Goal: 70%

“ —

I've lapsed a few times this year, but this year has been the longest I've ever gone without a controlled or scheduled substance since the age of 16. I really appreciate CKF and the whole foundation for being a wonderful helping hand. Thank you.

PATIENTS



AGENCY IMPACT

EXPERIENCE

Target Goal: 80%



98%

of patients surveyed report the care they receive is responsive to their cultural needs.



96%

Patients surveyed would recommend CKF to a friend or family member for treatment.



94%

of patients surveyed believe their clinician showed respect.

— “

My counselor is a very good session leader, and makes everyone feel welcome and heard.

” —



92%

of patients surveyed believe someone from CKF Addiction Treatment has talked with them about specific health goals.



92%

of patients felt they were given options about different treatments available for their condition.



89%

of patients surveyed feel safe with their clinician.

- “

It's been going very well. I feel very listened to, a very respectful group. No judgment from anyone.

” -



88%

of patients surveyed believe their clinicians listen.



86%

of patients surveyed believe their clinician explained things in a way that was easy to understand.



78%

of patients surveyed felt involved in treatment services as much as they wanted.



64%

of patients surveyed believe their family and friends are included in treatment services.

PATIENTS



AGENCY IMPACT

“ — CKF is like family for me. You all have done way more for me than my own family has done. You all are awesome. — ”

ACCESS



40%

of patients presenting with an emergent need will be assessed/admitted same day

Target Goal: 100%

**No Notes Provided



84%

presenting with an urgent need will be assessed/admitted within 24 hours

Target Goal: 95%



99%

of patients presenting with a routine need will be assessed/admitted within 24 hours

Target Goal: 95%



80%

Average daily detox/residential census of 80% capacity

Target Goal: 80%

EFFICIENCY



07

Average number of patients leaving AMA per month from CKF Residential

Target Goal: 5 or less patients per month



76%

of patients are attending outpatient groups each month

Target Goal: 80%



DATA UNAVAILABLE

of patients diagnosed with a substance use disorder complete an admission within 14 days of diagnosis

Target Goal: 75%

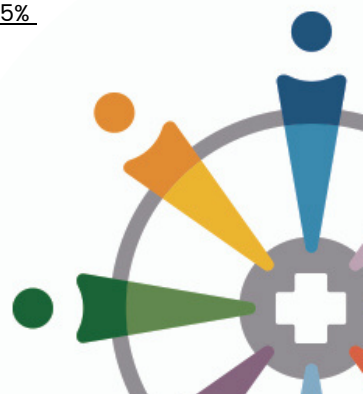


DATA UNAVAILABLE

of patients initiating treatment services had two or more CKF services within 34 days of initial admission

Target Goal: 75%

PATIENTS



AGENCY IMPACT



Average total employees per month in 2022

65% Average survey response rate

The percentages reported in this summary represent the percentages of employees who answered that they would "Agree" or "Strongly Agree" (or the equivalent) with the statement in each question.

Target Goal: 80%.



91%

of employees surveyed believe people are treated with respect and appreciation



88%

of employees surveyed would reapply to their current job



85%

of employees surveyed believe the environment supports the expression of different opinions, styles, & perceptions by patients.



84%

of employees surveyed feel respected and valued by their manager



81%

of employees surveyed would recommend CKF Addiction Treatment to a friend or family member for treatment services



79%

of employees surveyed would recommend others to work for CKF Addiction Treatment



79%

of employees surveyed receive monthly recognition from their manager



79%

of employees surveyed feel valued by their teammates



78%

of employees surveyed say they feel valued



77%

of employees surveyed believe the environment supports the expression of different opinions, styles, & perceptions by co-workers



75%

of employees surveyed report they are satisfied with job-related training



73%

of employees surveyed are satisfied with their work-life balance



71%

of employees surveyed feel comfortable speaking up about a problem



70%

of employees surveyed believe leadership responds effectively to internal issues



64%

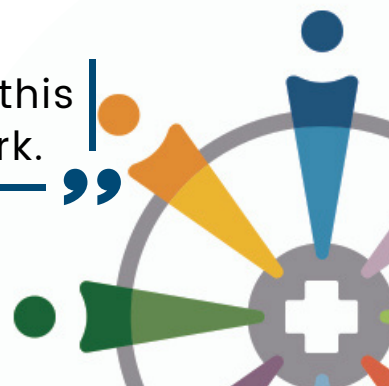
of employees agree that management decisions are transparent and explained

“ —

I love that you hire people who are passionate about helping others. I believe you have to have a heart for this work to come to work each day and it not feel like work.

— ”

EMPLOYEES



ANNUAL REVENUE

Target Goal: 8%
annual increase

7.5M

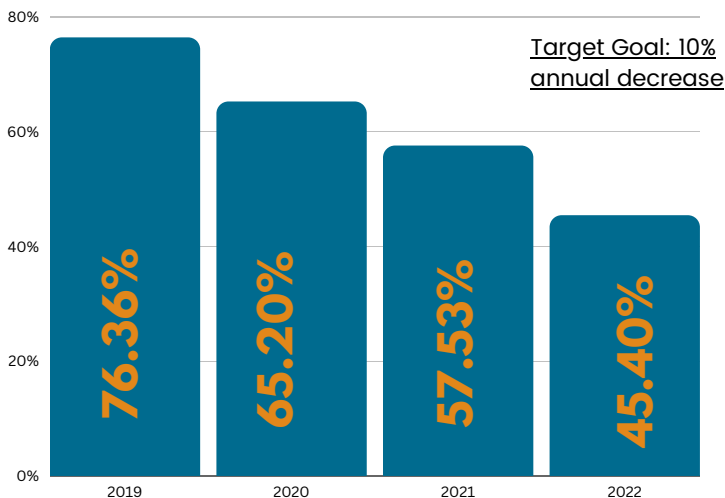
ANNUAL EXPENSES

5.9M

For CKF Addiction Treatment's full financial reporting for 2022 click [here](#).

TURNOVER

■ Turnover Rate %



Behavioral Health

FINANCIALS & BUSINESS FUNCTION

CONTRACTS

SALINA REGIONAL HEALTH CENTER

Assist hospital staff with care coordination for patients with substance use disorders

YEAR 12

STORMONT VAIL

Provide crisis intervention and treatment for Substance use disorders.

YEAR 8

COMMUNITY CORRECTIONS

Enhance and develop SUD interventions with the 28th judicial district

YEAR 10

FUNDING

SALINA CHARITIES LEAGUE

888 SPECIAL ALCOHOL TAX FUNDS

KANSAS HEALTH FOUNDATION

KANSAS CONNECTING COMMUNITIES (KCC)

KANSAS PREVENTIVE COLLABORATIVE COMMUNITY INITIATIVE GRANT (KPCCI)

CHRONIC DISEASE RISK REDUCTION GRANT (CDRR)

STATE OVERDOSE DATA TO ACTION GRANT (OD2A)

SALINA REGIONAL HEALTH CENTER CHIP GRANT

STATE OPIOID RESPONSE GRANT (SOR)

SALINE COUNTY HEALTH DEPARTMENT

ELDEN V MILLER CHARITABLE TRUST

FAMILY CENTERED TREATMENT FOR PREGNANT AND POSTPARTUM WOMEN GRANT (PPW)

PEW GRANT

KANHOUSE ARP GRANT

DIRECT SERVICES

Target Goal: 75%

76%

Average of billable services for direct patient employees per month

